



**GET WIRED UP**

Valid 1 July - 30 September 2022. While stock lasts.

Prices include VAT. Only while stocks last - July - September 2022 only E & EO - Terms & Conditions apply. Please note that actual stock may vary from pictures.



**SOLAR & BACKUP SOLUTIONS**

**ISITEPOWER-M HYBRID SOLUTION - 1 Phase Energy Storage System**

Features:



Integrated system of Grid Supply, Backup Power, and Power Management



High Protection Rating IP65 - Waterproof & Dustproof



Adapts to Complex Power Grids

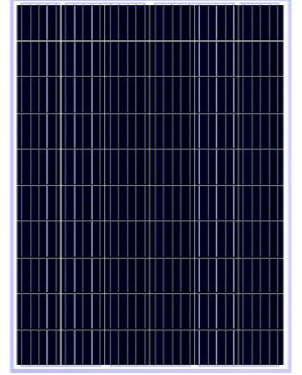


Compact, Light Weight & High Density Design



Mobile App Management

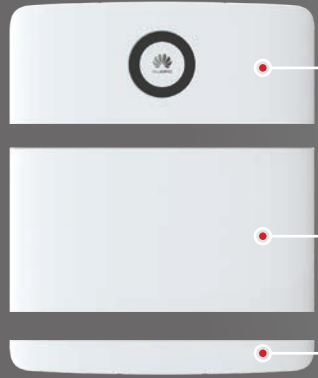
**SOLAR PV PANEL**



**R2,545<sup>00</sup>**

**SLP420S-24**

420W | 132 Monocrystalline Cells  
1940 x 1048 x 35mm



**R24,399<sup>00</sup>**

**ISP-M-MAP05A1**  
Power Module for 1-3  
5kWh Battery Modules

**R34,605<sup>00</sup>**

**ISP-M-MAB05B1**  
Battery Module 5kWh

**R539<sup>00</sup>**

**ISP-M-MAP15A11**  
Mounting Base/Bracket



**R59,549<sup>00</sup>**

**ISP-M-5K-5KWH**  
5kW 1PH Power Module &  
1 x 5kWh Battery System

**R94,149<sup>00</sup>**

**ISP-M-5K-10KWH**  
5kW 1PH Power Module &  
2 x 5kWh Battery System

**R128,759<sup>00</sup>**

**ISP-M-5K-15KWH**  
5kW 1PH Power Module &  
3 x 5kWh Battery System

- Solar Panels to be ordered separately

**GRID-TIED FUSION SOLAR RESIDENTIAL SYSTEM - WITH BATTERY BACKUP**



**Single phase on grid system**

Kit Includes:

- 1 x Single Phase Hybrid Inverter
- 1 x Single Phase Back-up Box
- 1 x Luna Smart String Battery (5/10/15kWh)
- 1 x 1PH kWh Meter for feed in limitation
- Solar Panels to be ordered separately

**R85,915<sup>00</sup>**

**FUSION-5K-5KWH**  
5KW Inverter  
5KWH Battery

**R127,740<sup>00</sup>**

**FUSION-5K-10KWH**  
5KW Inverter  
10KWH Battery

**R169,570<sup>00</sup>**

**FUSION-5K-15KWH**  
5KW Inverter  
15KWH Battery



**Three phase on grid system**

Kit Includes:

- 1 x Three Phase Hybrid Inverter
- 1 x Three Phase Back-up Box
- 1 x Luna Smart String Battery (10/15kWh)
- 1 x 3PH kWh Meter for feed in limitation
- Solar Panels to be ordered separately

**R139,315<sup>00</sup>**

**FUSION-10K-10KWH**  
10KW Inverter | 10KWH Battery

**R181,145<sup>00</sup>**

**FUSION-10K-15KWH**  
10KW Inverter | 15KWH Battery

**BACKUP POWER KITS - SOLAR READY**



**R18,149<sup>00</sup>**

**MKS-CK-05**

KIT INCLUDES:

- Solar Ready 5kW Hybrid Inverter on Easy Install Kit
- AC Isolators (input/output)
- DC Isolator
- Class 2 PV Surge Protection
- Class 2 AC Surge Protection
- Battery Fuse Protection
- Change Over Switch (inverter/off/bypass)
- PV Input: 150V Max



**R19,849<sup>00</sup>**

**HYLH-CK-05**

KIT INCLUDES:

- Solar Ready 5kW Hybrid Inverter on Easy Install Kit c/w AC & DC Protection
- PV Input: 450V Max
- For use with Blue Nova Batteries **BMAC-WIFI** required

**GRID-INTERACTIVE INVERTERS**

- Combines the functions of Inverter, MPPT Solar Charger, AC Battery Charger, UPS
- Pure Sine Wave



**R7,699<sup>00</sup>**

**PV18-3K-24VDC**

3KVA/3KW  
230VAC  
c/w 80A MPPT solar charger  
PV Input: 150V Max



**R12,899<sup>00</sup>**

**LUX-SNA-5K 48VDC**

5KVA/5KW  
230VAC  
c/w 100A MPPT solar charger  
PV Input: 450V Max

**GAUTENG**  
Alberton: 011 907 0796  
Bedfordview: 010 007 0727  
Boksburg: 011 020 3650  
Brakpan: 010 110 1565  
Centurion: 012 003 2030  
Fourways: 011 465 9802  
Gezina: 012 030 1902

Hyde Park: Opening Soon  
Kempston Park: 010 822 7140  
Longmeadow: 010 202 3300  
Montana: 012 030 0559  
Silver Lakes: 012 030 3100  
Southgate: 010 157 0107  
Strijdom Park: 011 251 5600  
Strubensvalley: 010 493 6946  
Waterfall: 010 157 0129

**KWAZULU-NATAL**  
Ballito: 032 946 2131  
Newcastle: 010 045 0910  
Pietermaritzburg: 087 405 0664  
Richards Bay: 087 898 8589  
Umhlanga: 031 020 0403

**LIMPOPO**  
Polokwane: 015 297 6136  
Tzaneen: 015 004 0286

**MPUMALANGA**  
Ermelo: 087 148 1711  
Middelburg: 087 700 2232  
Nelspruit: 013 752 3797

Secunda: 017 631 3531  
Witbank: 013 110 0580

**NORTH WEST**  
Lichtenburg: 018 632 2027  
Rustenburg: 014 050 0999

**EASTERN CAPE**  
Port Elizabeth: 041 110 0010

**WESTERN CAPE**  
Bellville: 021 946 1390  
Hermanus: 021 020 1441  
Paarden Eiland: 021 036 0996  
Parklands: 010 055 7212

Paarl: 022 110 0010  
Somerset West: 087 405 0566  
Vredenburg: 010 055 7213  
Worcester: 023 342 0231

# SOLAR & BACKUP SOLUTIONS

## BLUE NOVA energy

### LITHIUM BATTERIES RACPOWER RANGE



**R27,399<sup>00</sup>**

**BN52V-100-5.2K BP**

- 5120Wh | 48VDC | 100Ah
- Up to 4000 cycles @ 80% DoD
- High performance LiFePO4 technology

**6 YEAR**  
limited warranty



**R33,529<sup>00</sup>**

**BN52V-100-5.2K DU**

- 5120Wh | 48VDC | 100Ah
- Up to 8000 cycles @ 80% DoD
- High performance LiFePO4 technology

**10 YEAR**  
limited warranty

### MOBILE POWER SERIES

Ultra-safe LiFePO4 technology | Light weight & compact

**3 YEAR**  
limited warranty



**R899<sup>00</sup>**

**BN13V-8-104WH**

- 104Wh | 13VDC | 8Ah
- Up to 3000 cycles @ 80% DoD



**R1,379<sup>00</sup>**

**BN13V-11-140WH**

- 140Wh | 13VDC | 11Ah
- Up to 3000 cycles @ 80% DoD



**R1,979<sup>00</sup>**

**BN13V-22-280WH**

- 280Wh | 13VDC | 22Ah
- Up to 3000 cycles @ 80% DoD

### PETROL GENERATORS - 230VAC



**R7,399<sup>00</sup>**

**GEN2800KW**

2kVA 1PH  
Recoil Start

**R12,849<sup>00</sup>**

**TNG8000AE**

6kVA 1PH 25A  
Electric Start  
c/w Wheels



**R4,029<sup>00</sup>**

**BN13V-44-570WH**

- 570Wh | 13VDC | 44Ah
- Up to 3000 cycles @ 80% DoD



**R7,429<sup>00</sup>**

**BN13V-82-1K**

- 1000Wh | 13VDC | 82Ah
- Up to 3000 cycles @ 80% DoD



**R9,099<sup>00</sup>**

**BN13V-108-1.4K**

- 1400Wh | 13VDC | 108Ah
- Up to 3000 cycles @ 80% DoD



**R17,079<sup>00</sup>**

**BN13V-218-2.8K**

- 2800Wh | 13VDC | 218Ah
- Up to 3000 cycles @ 80% DoD

### LEAD ACID BATTERY



**R3,359<sup>00</sup>**

**DTM12100L**

- Long-life  
AGM 12V 100Ah  
M6 Terminal



**R3,685<sup>00</sup>**

**GEL12-100**

- GEL 12V 100Ah  
M6 Terminal  
With LCD Display

### LITHIUM BATTERIES PYLONTECH



**R17,229<sup>00</sup>**

**US2000B-PLUS**

- 48V 2.4kWh  
Lithium  
LiFePO4 Battery



**R22,899<sup>00</sup>**

**US3000C**

- 48V 3.552kWh  
Lithium  
LiFePO4 Battery

### 1 PHASE DIESEL GENERATORS - 230VAC



**R71,390<sup>00</sup>**

**NDG9F**

- 8.0KVA / 6.8KW  
Electric Start

### 3 PHASE SILENT DIESEL GENERATORS - 400VAC



**R110,240<sup>00</sup>**

**NDG21FS3**

- 19KVA  
Electric Start

**R117,380<sup>00</sup>**

**NDG21FS3-A**

- 19KVA  
Electric Start  
With Integrated ATS

**R115,980<sup>00</sup> R123,130<sup>00</sup> R138,300<sup>00</sup>**

**NDG28FS3**

- 25KVA  
Electric Start

**NDG28FS3-A**

- 25KVA  
Electric Start  
With Integrated ATS

**NDG33FS3**

- 30KVA  
Electric Start

### HYBRID EASY INSTALL KIT



### HYBRID GRID INTERACTIVE INVERTERS

• For use with Blue Nova Batteries BMAC-WIFI required



**R38,399<sup>00</sup>**

**DEYE-CK-5K**

- 5kVA | 48VDC



**R53,549<sup>00</sup>**

**DEYE-CK-8K**

- 8kVA | 48VDC



**R23,550<sup>00</sup>**

**DEYE-H-5K 48VDC**

- 5kVA | 48VDC | 1PH



**R38,745<sup>00</sup>**

**DEYE-H-8K 48VDC**

- 8kVA | 48VDC | 1PH

**R55,459<sup>00</sup>**

**DEYE-H-12K-3P 48VDC**

- 12kVA | 48VDC | 3PH

**5YR**  
WARRANTY

## SOLAR LIGHTING

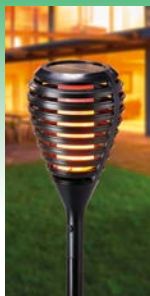
### SOLAR 2-IN-1 LANTERN/TORCH



**R79<sup>00</sup>**

**SP-SCL01**

- Working Time:  
±6hrs with Full Charge  
Charge via Mains/  
Solar or USB



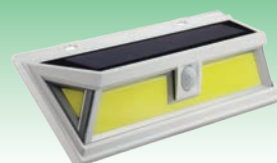
### FLAME EFFECT TORCH GARDEN SPIKE IP65

**R359<sup>00</sup>**

**BF-SGL-1W**

- 1W  
1 x LiPO 2000mAh  
1000H x 137°

### SOLAR WALL LIGHT PIR Motion Sensing - 3-5m / 270°



**R375<sup>00</sup>**

**B72306-16W**

- Lithium  
3.7V/2000mAh  
16W / 700lm

### SOLAR ALARM LIGHT IP55 PIR Motion Sensing - 5-8m / 125°



**R285<sup>00</sup>**

**KW-SNLN**

- 2W | 60lm  
Lithium 3.7V/1200mAh  
Siren (129dB)  
Remote controlled  
(10-15m), with  
6 Working Modes

### SOLAR WALL LIGHT IP65 PIR Motion Sensing



**R229<sup>00</sup>**

**LD-SWL-03W-CL-1**

- 1.5W / 200lm  
Lithium 3.7V/1200mAh  
2 Selectable  
working modes and  
back lighting

**14**  
YEARS OF SERVICE

[WWW.ACDCEXPRESS.COM](http://WWW.ACDCEXPRESS.COM)

SHOP. SWIPE.EARN. GET YOUR LOYALTY CARD TODAY!

Due to our policy of continuous improvement we reserve the right of modifying specifications and appearance. All prices are VAT inclusive and are subject to availability. All prices are valid while stocks last - 01 July 2022 - 30 September 2022. E&OE. Images may vary from actual products. All electrical products should be installed by a qualified technician.



# ACDC EXPRESS COMMUNITY



Women Bible Study (Avian Park)



Senior Youth Bible Study and Youth evenings  
Avian Park



Hoërskool Nelspruit Sports Sponsorship



Laerskool Nelspruit Sponsorship



BMX Project  
Avian Park



Children Swopshop (Avian Park)



Picnic Sunday Community Winter Sponsorship



## STORE HIGHLIGHTS

Have you ever wondered about the people running the stores you visit? Every store has a different story attached to it, all because of the amazing people that work there.

### ACDC EXPRESS SOUTHGATE

ACDC Express Southgate is managed by Jane Maluleka. Jane was previously an accountant at Pace Care Rental, and for Rage's leasing department.

The Southgate branch has been in business for one year. Jane says her team is full of diversity, with people from various backgrounds that speak many different languages. This serves them well, as the Southgate branch serves a cosmopolitan community.



### ACDC EXPRESS PORT ELIZABETH

ACDC Express Port Elizabeth is run by Michael and Bernard Heritage, a father and son team with a combined experience in the electrical field of 57 years. Mike was an electrical engineer and Bernard handles the administrative arm of the business.

Bernard is the branch manager of the PE branch, which has been in business since 2017. The branch services most of the Eastern Cape, with customers from Mthata to the Garden Route. Staff at the branch keep their customers happy with hard work and dedication.



# WORKING REMOTELY

## CORDLESS POWER TOOLS



**R449<sup>00</sup>**

**LY529**

3.6V Cordless Screwdriver  
180rpm | 4Nm  
1/4" Hex Drive  
With 55pc bit set  
LED Light



**R1,399<sup>00</sup>**

**LCW777-1A**

20V Cordless Impact Driver  
180Nm | 2.0Ah Battery  
1/4" Hex Drive  
Forward/Reverse



**R1,629<sup>00</sup>**

**LCH777-1**

20V Cordless Rotary Hammer  
No Load Speed: 0-900RPM  
Impact Force: 1.1J  
Impact Rate: 0-5000BPM  
2.0Ah Battery

**R2,039<sup>00</sup>**

**LCG777-1**

20V Cordless Angle Grinder  
10000RPM  
Disc Dia: 115/125mm  
Ø22mm | 4.0Ah Battery



## PROFESSIONAL POWER TOOLS



**BOSCH**  
Invented for life



**R1,365<sup>00</sup>**

**GSB-13-RE**

Impact Drill  
600W | 0 - 2800rpm  
1.5 - 13mm Chuck  
Variable Speed

## PLASTIC TOOL BOXES



**R299<sup>00</sup>**

**MJ-12056**

500L x 240H x 260Wmm



**R139<sup>00</sup>**

**MJ-10555A**

395L x 235H x 175Wmm

## PEN TYPE TESTERS



**R199<sup>00</sup>**

**MS8922A**

Max test time: 30s  
(10 min recovery)  
CAT III 400V  
12V-400VAC



**R599<sup>00</sup>**

**MS8211**

Logic level test  
Auto Ranging  
MAX/Data hold  
Cat II 600V  
200mV-600VAC

## DIGITAL CLAMP METER



**R1,929<sup>00</sup>**

**MS2140B**

1000V  
Backlit LCD Dual  
Display | Non contact  
volts detector  
Inrush Hold

## SHEARS



**R635<sup>00</sup>**

**BM1325**

X-PRO 50mm<sup>2</sup>  
Spring Loaded  
Stripping and  
Cutting Cables



**R675<sup>00</sup>**

**BM1330**

X-PRO Evo 50mm<sup>2</sup>  
Longer Lever  
Stripping and  
Cutting Cables  
Micro Serrated Blades

## COMPRESSOR - DIRECT DRIVE



**MCFRC100**

**R2,799<sup>00</sup>**

Tank Capacity: 24L  
Motor Size: 1.1KW / 1.5HP  
Input: 230V/50Hz

Max. Pressure: 800Kpa (8 Bar)  
Free Air Delivery: @700Kpa:65l/m  
Piston Displacement: 138l/Min

Used for the following applications:

- Tyre Centers
- Car Washes
- Petrol Stations
- Garage
- Supermarkets
- Bakers
- Laboratories

## HellermannTyton

### INSULOK CABLE TIES

- Internal serrations for positive hold
- High tensile strength
- Low insertion force
- Easily install by hand or tensioning tool

**R390<sup>00</sup>**

**T30RBK**

PA66 | 148 x 3.5mm  
100 per pack

**R650<sup>00</sup>**

**T50RBK**

PA66 | 198 x 4.7mm  
100 per pack

**R1150<sup>00</sup>**

**T50IBK**

PA66 | 305 x 4.7mm  
100 per pack

**R1490<sup>00</sup>**

**T120RBK**

PA66 | 388 x 7.8mm  
50 per pack



## SCREWDRIVER BIT SET

**R790<sup>00</sup>**

**SB157243**

404L x 195H x 200W



## PORTABLE WORK BENCHES

**R299<sup>00</sup>**

**RWM-WB002**

605W x 630D x 780Hmm



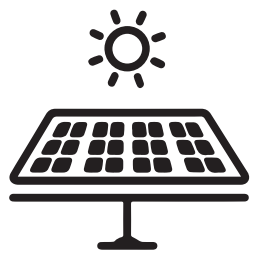
**14**  
YEARS OF SERVICE

[WWW.ACDCEXPRESS.COM](http://WWW.ACDCEXPRESS.COM)

SHOP. SWIPE.EARN. GET YOUR LOYALTY CARD TODAY!

Due to our policy of continuous improvement we reserve the right of modifying specifications and appearance. All prices are VAT inclusive and are subject to availability. All prices are valid while stocks last - 01 July 2022 - 30 September 2022. E&OE. Images may vary from actual products.

All electrical products should be installed by a qualified technician.



# SOLAR SOLUTIONS



## EMBRACE THE POWER OF THE SUN. EMBRACE SOLAR ENERGY AND BEAT LOAD SHEDDING.

Choosing a solar energy solution doesn't have to be complicated. Here's how to pick the best solution for your needs.

### Grid-interactive photovoltaic system

These systems generate clean power from sunlight and can also use power from other renewable sources. During the day, the system charges deep cycle solar batteries and can feed excess power into the electricity grid.

At night, the system can draw power from the electricity grid.

During load shedding or a power failure, the system draws energy from the batteries and solar panels to meet your electricity needs.

#### Advantages:

- Eco-friendly, renewable, and sustainable power source.
- Cost-effective in the long-term, especially in comparison to generators.

#### Benefits:

- Saves you money on electrical bills.
- Access to power when the electricity grid is offline.

### Grid-tied solar system

These systems are a cheaper alternative due to less pricey equipment and easier installation. For premises where power usage is predominantly in the daytime, a grid-tied solar system offers efficient solar power at a lower cost. Grid-tied solar systems don't require expensive batteries or maintenance, but they don't operate if the electrical grid goes offline.

#### Advantages:

- No need for expensive batteries.
- Low-cost installation.

#### Benefits:

- Lower daytime electricity bills.



HYLH-5K-5KWH-BP



SOLARSET 3.0

For advice on which solar power solution is best for YOU, visit [www.acdcexpress.com](http://www.acdcexpress.com) or your nearest ACDC Express store and talk to one of our friendly staff members.

**14**  
YEARS OF SERVICE

[WWW.ACDCEXPRESS.COM](http://WWW.ACDCEXPRESS.COM)

SHOP. SWIPE. EARN. GET YOUR LOYALTY CARD TODAY!

Due to our policy of continuous improvement we reserve the right of modifying specifications and appearance. All prices are VAT inclusive and are subject to availability. All prices are valid while stocks last - 01 July 2022 - 30 September 2022. E&OE. Images may vary from actual products. All electrical products should be installed by a qualified technician.

# GEWISS CIRCUIT BREAKERS & ENCLOSURES

## DIN MINIATURE CIRCUIT BREAKERS



Type C | 230VAC  
1 Pole | 1M

**R55<sup>00</sup>**

**GW92105**  
6A | Icu: 6kA

**R55<sup>00</sup>**

**GW92106**  
10A | Icu: 6kA

**R55<sup>00</sup>**

**GW92108**  
16A | Icu: 6kA

**R55<sup>00</sup>**

**GW92109**  
20A | Icu: 6kA

**R55<sup>00</sup>**

**GW92110**  
25A | Icu: 6kA

**R55<sup>00</sup>**

**GW92111**  
32A | Icu: 6kA

**R59<sup>00</sup>**

**GW92112**  
40A | Icu: 6kA



Type C | 230VAC  
2 Pole | 2M

**R175<sup>00</sup>**

**GW92145**  
6A | Icu: 6kA

**R175<sup>00</sup>**

**GW92146**  
10A | Icu: 6kA

**R175<sup>00</sup>**

**GW92148**  
16A | Icu: 6kA

**R175<sup>00</sup>**

**GW92149**  
20A | Icu: 6kA

**R175<sup>00</sup>**

**GW92150**  
25A | Icu: 6kA

**R175<sup>00</sup>**

**GW92151**  
32A | Icu: 6kA

**R179<sup>00</sup>**

**GW92152**  
40A | Icu: 6kA

**R345<sup>00</sup>**

**GW92052**  
50A | Icu: 10kA

**R345<sup>00</sup>**

**GW92053**  
63A | Icu: 10kA

## EARTH LEAKAGE RELAY



**R545<sup>00</sup>**

**GWD4042**  
63A | AC Type  
IΔ: 30mA  
2 Pole | 2 Mod

## 40 CD RANGE ENCLOSURES IP40



**R459<sup>00</sup>**

**GW40045**  
12 Module  
Accepts 1 x TB  
size 1 or 2  
(not included)



**R685<sup>00</sup>**

**GW40047**  
24 Module  
Accepts 1 x TB  
size 1 or 2  
(not included)

## SMART WIFI TIMER/SWITCHES



**R399<sup>00</sup>**

**ATMS1601 230VAC**  
100-240VAC, 50Hz  
16A@250VAC  
1x Dry Contact  
Contact Input

### Features

- All programming stored locally on device even when disconnected
- After power failure, schedules must be retrieved from the cloud
- Pushbutton for manual On/Off Switching
- 30 On/Off Programs can repeat daily or on specific days



## SMART WIFI SWITCHING MODULES

Neutral Required | 230VAC

Designed to transform your traditional switch that allows the connected device to be controlled remotely



**R279<sup>00</sup>**

**QS-WIFI-S03-L-1G**  
1 Gang  
250W/ LED  
46 x 46 x 18mm



**R299<sup>00</sup>**

**QS-WIFI-S05-L-2G**  
2 Gang  
2 x 250W/ LED  
46 x 46 x 18mm



**R299<sup>00</sup>**

**QS-WIFI-S03-1G**  
1 Gang  
250W/ LED  
46 x 46 x 18mm



**R349<sup>00</sup>**

**QS-WIFI-S03-2G**  
2 Gang  
2 x 250W/ LED  
46 x 46 x 18mm



**R479<sup>00</sup>**

**QS-WIFI-D01-1G**  
1 Gang  
150W/ LED  
46 x 46 x 18mm



**R529<sup>00</sup>**

**QS-WIFI-D01-2G**  
2 Gang  
2 x 100W/ LED  
46 x 46 x 18mm



## MOTOR CONTROL

### MOTOR PROTECTION CIRCUIT BREAKERS

32A Frame | High Breaking Capacity | 100kA@400V



**R759<sup>00</sup>**

**TCMS-32H 4**  
Rated Current: 2.5-4A

**R759<sup>00</sup>**

**TCMS-32H 6**  
Rated Current: 4-6A

**R759<sup>00</sup>**

**TCMS-32H 8**  
Rated Current: 6-8A

**R799<sup>00</sup>**

**TCMS-32H 10**  
Rated Current: 6-10A

## ENCLOSURES

### D.M.C. POLYESTER UTILITY ENCLOSURES IP65



**R95<sup>00</sup>**

**UTY2**  
110 x 110 x 90



**R199<sup>00</sup>**

**UTY4**  
210 x 160 x 90

**R345<sup>00</sup>**

**UTY6**  
288 x 238 x 135

## ENERGY METERS



**R199<sup>00</sup>**

**RP-HXE115-KP**  
Hexing Prepaid  
230VAC | 80A | 1 Phase  
Integrated keypad  
BS Footprint



**R215<sup>00</sup>**

**RP-GEM-LITE**  
Landis + GYR Prepaid  
120-230VAC | 80A  
1 Phase  
1000 Pulses/kWh



**R429<sup>00</sup>**

**NV102**  
NetVendor Submeter  
230VAC | 80A  
1 Phase  
Integrated Keypad

### Self Managed Software

Property managers/landlords have the option of making use of our vending software which they can access on site, manage, generate and print tokens.

### Chain Store Vending

Recharger collects cash on landlord's behalf & service fee recovered in the transaction tokens are purchased. Funds collected during the month are deposited into the landlord's account after month-end.



- Easy to install
- Ideal for new reticulation as well as retrofitting of credit meters
- High Surge Protection
- STS compliant

14 YEARS OF SERVICE

WWW.ACDCEXPRESS.COM

SHOP. SWIPE.EARN. GET YOUR LOYALTY CARD TODAY!

Due to our policy of continuous improvement we reserve the right of modifying specifications and appearance. All prices are VAT inclusive and are subject to availability. All prices are valid while stocks last - 01 July 2022 - 30 September 2022. E&OE. Images may vary from actual products. All electrical products should be installed by a qualified technician.



# BATTERIES

## WHICH BATTERY IS BEST FOR YOU? LET'S LOOK AT THE BENEFITS, LIMITATIONS, AND HISTORY OF THESE ENERGY STORAGE DEVICES!

### Lead-acid:

Lead-acid batteries were the first type of rechargeable battery ever created. Invented in 1859 by French physicist Gaston Planté, these batteries have a relatively low energy density, but are cheaper than the alternatives. They are still in use today where high surge currents are required and bulky batteries are not a concern. Motor vehicles still use them for the starter motor. Because of their price, they are often used even when a better energy density would be beneficial.

#### **Benefits:**

- Inexpensive compared to newer technologies.
- Good power-to-weight ratio.
- Supplies high surge currents.

#### **Limitations:**

- Low energy density.
- Bulky.
- Must be kept upright.

### Gel batteries:

It took more than 60 years for lead-acid batteries to be improved upon, with the invention of the gel battery. Gel batteries are one of two valve-regulated lead-acid battery designs, commonly known as sealed lead-acid batteries. While still making use of lead and acid, the introduction of silica dust makes the electrolyte a thick, putty-like gel.

Gel batteries can be stored in any orientation and offer low maintenance energy storage with vibration and shock resistance. These batteries are often used in off-grid applications, as well as motorcycles and all-terrain vehicles.

#### **Benefits:**

- Shorter recharge time than lead-acid batteries.
- Can be used in any orientation.
- Safe to use.
- Safe for the environment.

#### **Limitations:**

- Can't be overcharged.
- Have a shorter lifespan than lead-acid batteries.
- Increased price.

### Lithium iron phosphate batteries:

Lithium is the metal with the lowest density and the greatest electrochemical potential and energy-to-weight ratio, making it a great choice for batteries. In the 1970s, the first lithium-ion batteries were available commercially, many years after the first experiments with lithium batteries started in 1912. Lithium-ion batteries had relatively low cycle lifespans and could overheat and catch fire. Our batteries use lithium iron phosphate. While it has a lower energy density than lithium-ion, the life cycle increases four to fivefold, and the risk of overheating and combusting is completely removed.

These batteries offer long cycle life and high safety. While they cost more, they offer exceptional cycle life, with some batteries reaching over 10,000 cycles!

These batteries are often used in home energy storage systems, emergency lighting, electric cars, caravans, motorhomes and boats.

#### **Benefits:**

- Great battery safety.
- Long cycle lifespan.
- Lower human and environmental impact than alternatives.

#### **Limitations:**

- Lower energy density than lithium cobalt.
- High price per battery.

SY1270



NBS200-12



BN52V-100-5.2K-BP



# LIGHTING SOLUTIONS

## LED LIGHT PANEL

5500K | 230VAC | 120° Adjust. Panels  
Die Cast Aluminium & PC



**R27900**

**LS-GL-60W-DL**

60W | E27 | 600lm

**R34900**

**LS-GL-100W-DL**

100W | E27 | 1000lm

## LED TORCHES

**R6900**  
EACH

**SP-WL47B**

3W | 300lm  
3 x AA (Incl)  
Magnet & 360°  
Flexible Hook



**R13900**  
EACH

**SPWL-44AR**

20SMD + 3PCS | 400lm  
3.7V 1200mAh Lithium Battery  
Rechargeable

5-in-1 Mini LED  
Pocket Lamp  
• 1 x USB 5VDC  
• Charging Cable  
• Colour Temp: 6000K  
• c/w Magnet and  
Swivel Hook



**R78900**

**KB2146-20W**

20W | 1600lm  
7.4V 2400mAh  
ACDC Adaptor / 12VDC  
Car Charger / USB



## LED FLOODLIGHTS IP65



**2YR**  
WARRANTY

**FL-\*W-CW**

230VAC | Driverless  
• Cool White (5500K)

\* Add Wattage to Code:  
10, 20, 30, 50, 100, 150

**10W R4900**

**20W R7500**

**30W R10900**

**50W R14900**

**100W R26900**

**150W R42500**

## LED WORK LIGHT

**R35900**

**SJ-2678**

60 LEDs | 150lm  
240V Adaptor & 12VDC  
Car lighter charger  
Rechargeable NiMH  
5-6hrs



## LED PORTABLE WORK LIGHTS

**R25900**

**PFL-5W-DL**

5W | Daylight (6000K)  
7.4V, 2200mAh (Li)  
Rechargeable  
3hrs Battery Life  
c/w Charger & Car Charger



**R37900**

**WL03-COB-10W**

230VAC | 10W | 750lm  
Daylight (6000K)  
Working Time:  
3hrs High | 10hrs Low

## LED EMERGENCY BULKHEADS IP65

**R1,03900**

**KEM2D28W**

16W | PC Material  
3.6V 4.5Ah > 3 hrs  
Wall or Ceiling Mount



## LED EMERGENCY LAMPS

**R7500**

**EMG-A60-9W-CW**

9W / E27  
Cool White  
Battery Life: Approximately 4-5 Hours



**R11900**

**EMG-A60-12W-CW**

12W / E27  
Cool White  
Battery Life: Approximately 4-5 Hours

## LED EMERGENCY LIGHTS - 230VAC | Portable | c/w Battery Charger



**R10900**

**NS350LX**

135lm  
30 LEDs



**R15900**

**AL-2166**

360lm



**R18900**

**AL-3600**

360lm



**R18900**

**LED008**

98-220lm



**R20900**

**RWELEDJ-2**

38-81lm



**R32500**

**YJ-2886**

3-in-1 Torch / Lantern /  
Powerbank  
1 x 5W + 22 SMD | 550lm  
2 x 2200mAh  
Rechargeable  
c/w Charging Adaptor  
1 x USB 5VDC/500mA

**R32500**

**YJ-2829**

2-in-1 Torch / Lantern  
1 x 5W + 25 SMD | 550lm  
6000mAh  
Rechargeable  
c/w Built in Charger

## SMART WIFI LED STRIP KIT IP54

**R59900**

**ES-WFD03-5M-RGBW**

5m Length  
c/w Controller  
Power Supply  
RGBW Colour Changing  
LEDs: 48/m, 4.8W/m



## LED STRIP LIGHTS



24VDC | 5m Length | 10W/m | 1100lm | CRI 90

**R34900**

**LD-COB-R\***

\* Add Colour to Code:  
• DL (Daylight)  
• WW (Warm White)

**R37900**

**LD-COB-R\***

\* Add Colour to Code:  
• R (Red), • BL (Blue)  
• GN (Green)

**R1,11900**

**LD-COB-R-RGB**

• R (Red), • BL (Blue), • GN (Green)  
Colour Changing

**14**  
YEARS OF SERVICE

[WWW.ACDCEXPRESS.COM](http://WWW.ACDCEXPRESS.COM)

[SHOP.SWIPE.EARN](http://SHOP.SWIPE.EARN). GET YOUR LOYALTY CARD TODAY!

Due to our policy of continuous improvement we reserve the right of modifying specifications and appearance. All prices are VAT inclusive and are subject to availability. All prices are valid while stocks last - 01 July 2022 - 30 September 2022. E&OE. Images may vary from actual products. All electrical products should be installed by a qualified technician.



# PLUGS & SOCKETS

## SP7000 SOCKETS & SWITCHES



**R3900**

SP7001-W



**R4500**

SP7002-W



**R4900**

SP7003-W



**R7900**

SP7402-W



**R7900**

SP7403-W



**R14900**

SP7404-W



**R5500**

SP7001-S

2 x 4  
1 Lever 1 Way



**R5900**

SP7002-S

2 x 4  
2 lever 1 Way



**R6900**

SP7003-S

2 x 4  
3 lever 1 Way



**R8900**

SP7402-S

4 x 4  
2 x 16A Switched  
Sockets



**R8900**

SP7403-S

4 x 4  
1 x N-Type + 1 x 16A  
Switched Sockets



**R15900**

SP7404-S

4 x 4  
1 x 16A + 2 x USB  
5V, 2100mA output

## B7000 SOCKETS & SWITCHES



**R1900**

B7001

2 x 4  
1 Lever 1 Way



**R2500**

B7002

2 x 4  
2 Lever 1 Way



**R2900**

B7003

2 x 4  
3 Lever 1 Way



**R5900**

B7402

4 x 4  
2 x 16A Switched  
Socket



**R6900**

B7403

4 x 4  
1 x N-Type + 1 x 16A  
Switched Sockets



**R10900**

B7404

4 x 4 | 1 x N-Type +  
1 x 16A + 1 USB 5V,  
500mA Outputs

## ADAPTORS



**R1500**

SK250096  
Schuko / Euro  
Adaptor



**R2900**

AP306  
3 x 16A



**R3500**

YJ-N22  
2 x SA & 2 x Euro



**R1800**

A416  
Triple Euro Plug  
Adaptor



**R8900**

AR-21SP  
1 x SA & 1 x N-Type  
& 1 x Schuko  
c/w 6kA Surge Protection



**R9900**

AP111-2C  
SA & Schuko &  
Euro | with 2 x USB  
Charger 1A



**R17900**  
A-005  
3 x 16A N-Type  
Sockets  
3 x 5V USB  
Ports

## PLUG TOPS



**R950**

4036  
16A Hollow Pins



**R1300**

RA300BK  
Rubber 16A

## WEATHERPROOF WALL BOXES



**R11500**

A311S

16A Single  
Socket PVC



**R18900**

A311D

16A Double  
Socket Fibre

## INDUSTRIAL SOCKET OUTLET



**R8900**

A703

2 x 16A Sockets with  
On/Off Switches

## SURGE PROTECTION PLUG TOPS



**R5900**

LP-600

16A Mains Plug  
6500A Surge  
Protector



**R5900**

LP-603

16A Mains Plug  
6500A Surge  
Protector | Dedicated

## WAGO SPLICING CONNECTORS

### COMPACT SPLICING CONNECTORS - Solid Wire: 0.2-4mm<sup>2</sup> | Flexi Wire: 0.2-4mm<sup>2</sup>



**R11900**

PACK OF 12

221-413/12  
3 Way | 32A



**R11900**

PACK OF 16

221-412/16  
2 Way | 32A



**R14900**

PACK OF 18

221-415/8  
5 Way | 32A

### INLINE SPLICING CONNECTORS

Solid Wire: 0.2-4mm<sup>2</sup> | Flexi Wire: 0.2-4mm<sup>2</sup>



**R12900**

PACK OF 12

221-2411/12  
Inline | 32A

14  
YEARS OF SERVICE

WWW.ACDCEXPRESS.COM

SHOP.SWIPE.EARN. GET YOUR LOYALTY CARD TODAY!

Due to our policy of continuous improvement we reserve the right of modifying specifications and appearance. All prices are VAT inclusive and are subject to availability. All prices are valid while stocks last - 01 July 2022 - 30 September 2022. E&OE. Images may vary from actual products. All electrical products should be installed by a qualified technician.

**BEST BUY**

**LED TUBE LIGHTING** T8 | Frosted | Ø26.3mm | Non-Dimmable

**LED FILAMENT LAMPS**



**R2100**

**B60-4W-\*\*-\***  
4W | 450lm | 360°  
\* Add Base to Code:  
E27, B22

**R2500**

**B60-6W-E27-\***  
6W | 700lm | 360°  
Lamp Base: E27

**R2900**

**B60-6W-B22-CW**  
6W | 700lm | 360°  
Lamp Base: B22

**R3500**

**B60-6W-E14-\***  
6W | 700lm | 360°  
Lamp Base: E14

\* Add Colour to Code: ● WW (Warm White), ○ CW (Cool White)



2W | 225lm | 360°

**C35-2W-E14-\*** **R1900**

Lamp Base: E14

**C35-2W-B22-\*** **R4900**

Lamp Base: B22

**C35-2W-E27-\*** **R4900**

Lamp Base: E27

\* Add Colour to Code: ● WW (Warm White), ○ CW (Cool White)



4W | 450lm | 360°

**C35-4W-E14-CW** **R2500**

Lamp Base: E14

**C35-4W-B22-CW** **R2500**

Lamp Base: B22

**C35-4W-E27-\*** **R2500**

Lamp Base: E27

230VAC | CRI: 80 | 360° Beam Angle | Long Filament



4W | 450lm | ST64

**ST64-4W-\*\*-\*** **R2900**

6W | 700lm | ST64

**ST64-6W-B22-\*** **R3500**

Lamp Base: B22

**ST64-6W-E27-CW** **R3500**

Lamp Base: E27

\* Add Base to Code: E27, B22

\* Add Colour to Code: ● WW (Warm White), ○ CW (Cool White)



**R4900**

**G125-4W-B22-\***

4W | 450lm | G125

Lamp Base: B22

**R7900**

**G125-6W-\*\*-\***

6W | 750lm | G125



**R6900**

**AS-G125-ST**

2W | E27 | G125

Long Filament

Warm White

**LED LAMP VALUE PACKS**



**R2900**  
PER PACK

**LED-A60-5W-\*\*-\*/2**

5W | 450lm | 270°

\* Add Base to Code: E27, B22

\* Add Colour to Code:

● WW (Warm White),

○ CW (Cool White),

○ DL (Daylight)



**R4900**  
PER PACK

**T-LEDG50R-E27-\*/3**

3W | E27 | 245lm | 180°

\* Add Colour to Code:

● WW (Warm White),

○ CW (Cool White)

**LED PLANT GROW LAMP**



**R7500**

**XGY-A60-8-E27**

8W | Full Colour Spectrum

Ideal for greenhouse glass or plastic,  
Planting factory, Hydroponic shelves,  
Home Planting

**LED PLANT GROW STRIPS**



**R2,75000**

**HH-SRB120W**

Red:Blue - 5:1 - Suitable for most  
plant growing applications  
120/m LEDs | 28W/m Power  
10m Length



**LED CABINET LIGHTS**

**R21900**

**MMSL1/2**

0.6W | 36lm | 6000K  
Small, Portable  
Easy to Install



**R29500**

**M3062CH-DL**

4W | 180lm | 6000K  
PIR & Daylight Sensor  
3m Sensing Distance

**NEW!**



5V USB Charging | Alluminium Alloy | IP20  
Colour Temp: 4200K | c/w Motion Sensor

**R23900**

**DL-6110-23**

1.4W | 140lm  
230mm

**R29900**

**DL-6110-40**

3W | 300lm  
400mm

**LED LINEAR BATTENS** T8 | 6000K | 230VAC | No Light Fitting Required



**R11500**

**LEDT8-001A-2x9W-DL**

2 x 9W | 1800lm  
610mm

**R13500**

**LEDT8-001A-2x18W-DL**

2 x 18W | 3600lm  
1120mm

**LED PLANT GROW TUBES** - 75% Blue (450nm) / 25% Red (660nm)

Can be used wherever plants do not receive  
enough natural light or in agricultural  
applications.



**R12500**

**LEDT8PG-A2FR**

9W | 2FT

**R13900**

**LEDT8PG-A3FR**

15W | 3FT

**R17500**

**LEDT8PG-A4FR**

18W | 4FT

**R21500**

**LEDT8PG-A5FR**

22W | 5FT

**LED SLIM BATTENS** Low Profile Body | Easy to Mount | Daylight (6000K)



**R7500**

**DY-30-10W**

10W | 300mm

**R9900**

**DY-60-20W**

20W | 600mm

**R19900**

**DY-120-40W**

40W | 1200mm

Ultra Slim Profile (Narrow  
Body) - Input Voltage:  
230VAC | High transparent  
opal diffuser

**14**  
YEARS OF SERVICE

[WWW.ACDCEXPRESS.COM](http://WWW.ACDCEXPRESS.COM)

[SHOP.SWIPE.EARN](http://SHOP.SWIPE.EARN). GET YOUR LOYALTY CARD TODAY!

Due to our policy of continuous improvement we reserve the right of modifying specifications and appearance. All prices are VAT inclusive and are subject to availability. All prices are valid while stocks last - 01 July 2022 - 30 September 2022. E&OE. Images may vary from actual products. All electrical products should be installed by a qualified technician.

# LIGHTING SOLUTIONS

## CONTEMPORARY



**R295<sup>00</sup>**

**41019-1**  
1 x 100W | E27  
Ø170mm  
Metal + Wood



**R375<sup>00</sup>**

**40944-1**  
1 x 60W | E27  
Ø220mm  
Metal + Wood



**R419<sup>00</sup>**

**MDM-2766**  
1 x 60W | E27  
Ø230 x 930mm  
Metal + Wood | Black



**R459<sup>00</sup>**

**40945-1**  
1 x 100W | E27  
Ø195mm  
Metal + Wood



**R585<sup>00</sup>**

**MDM-2768**  
1 x 60W | E27  
Ø290 x 970mm  
Metal + Wood | Black



**R525<sup>00</sup>**

**MDM-2980-S-W**  
1 x 60W | E27 | White  
Ø270 x 960mm | Metal  
\* Add Colour to Code: **B** (Black), **W** (White)



**R729<sup>00</sup>**

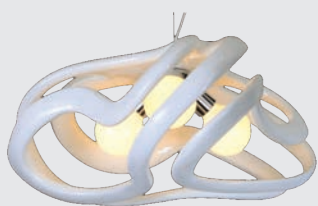
**MDM-2980-L-\***  
1 x 60W | E27  
Ø360 x 1010mm | Metal



**R1,085<sup>00</sup>**

**UR1001-3**  
3 x 60W | E27  
Ø600 x 1110mm  
Aluminium

## EDGY



**R2,039<sup>00</sup>**

**3210**  
3 x 40W | E27  
Ø500 x 200mm  
Poly-Resin



**R2,525<sup>00</sup>**

**3218**  
5 x 40W | E27  
Ø500 x 400mm  
Poly-Resin

## ELEGANT



**R495<sup>00</sup>**

**AL-G012**  
60W | E27  
Ø270mm | Glass  
Clear



**R509<sup>00</sup>**

**V29288**  
1 x 40W | E27  
Ø170 x 260 x 1200mm  
Glass | Amber



**R575<sup>00</sup>**

**V29289**  
1 x 40W | E27  
Ø270 x 190 x 1200mm  
Glass | Clear



**R915<sup>00</sup>**

**8505-1P**  
20W | G4  
200mm | Glass  
Clear / Frost



**R959<sup>00</sup>**

**8615-1P**  
20W | G4  
200mm | Rose Gold  
Brass



**R5,025<sup>00</sup>**

**MX9976-5**  
72W | 3600lm | LED  
Ø650 x 400mm  
Metal + Aluminium + PC  
Chrome

## MODERN

### LED BOLLARDS IP54

230VAC | Die Cast Aluminium | 5W | 500lm | Colour Temp.: 4000K | Dark Grey



**R819<sup>00</sup>**

**YSC-1007**

76 x 76 x 800mm



**R1,145<sup>00</sup>**

**YSC-1000**

76 x 76 x 800mm



**R1,145<sup>00</sup>**

**YSC-1002**

100 x 160 x 850mm



**R1,189<sup>00</sup>**

**YSC-1004**

50 x 120 x 800mm

### LED WALL LIGHTS IP54



**R495<sup>00</sup>**

**YSC-2034**

76 x 106 x 65mm



**R545<sup>00</sup>**

**YSC-2013**

50 x 120 x 180mm



**R575<sup>00</sup>**

**YSC-2011**

60 x 242 x 122mm



**R735<sup>00</sup>**

**YSC-2017**

100 x 195 x 164mm

### BULKHEADS - Lamps not Included



**R395<sup>00</sup>**

**BK6003**

E27 | IP54  
280 x 175 x 133mm  
Aluminium / Plastic



**R619<sup>00</sup>**

**FL1057**

E27 | IP65  
330 x 230 x 190mm  
Aluminium / Glass

### 2D PLASTIC BULKHEADS - Lamps not Included



**R239<sup>00</sup>**

**CL2153**

Lamp: 2D-16-4P  
Ø257 x 73mm | IP54  
PC cover and ABS base



**R275<sup>00</sup>**

**CL3870**

Lamp: 2D-28-4P  
Ø330 x 99mm | IP65  
PC cover and ABS base



**R289<sup>00</sup>**

**CL3808B**

Lamp: 2D-28-4P  
Ø325 x 100mm | IP65  
PC cover and ABS base

### LED DECORATIVE BULKHEADS IP54

90 Lumens p/w | Body Material: Die-cast Aluminium  
Diffuser: PC | Colour Temp: 6000K | Ø280 x 95mm | Complete with 20W LED



**R499<sup>00</sup>**

**LB-1932B**



**R499<sup>00</sup>**

**LB-1932C**



**R499<sup>00</sup>**

**LB-1932D**



**R510<sup>00</sup>**

**LB-1932A**

### LED BULKHEADS

9W | 720lm | Body Material: ABS | Diffuser: Glass | Colour Temp: 6000K | Complete with 9W LED  
\* Add Colour to Code: **WH** (White), **BK** (Black)

200 x 120mm

Ø185mm

200 x 120mm

Ø185mm



**R155<sup>00</sup>**

**BL1117-9W-\***



**R165<sup>00</sup>**

**BL1112-9W-\***



**R165<sup>00</sup>**

**BL1118-9W-\***



**R175<sup>00</sup>**

**BL1113-9W-\***

#### GAUTENG

Alberton: 011 907 0796  
Bedfordview: 010 007 0727  
Boksburg: 011 020 3650  
Brakpan: 010 110 1565  
Centurion: 012 003 2030  
Fourways: 011 465 9802  
Gezina: 012 030 1902

#### Hyde Park: Opening Soon

Kempton Park: 010 822 7140  
Longmeadow: 010 202 3300  
Montana: 012 030 0559  
Silver Lakes: 012 030 3100  
Southgate: 010 157 0107  
Strijdom Park: 011 251 5600  
Strubensvalley: 010 493 6946  
Waterfall: 010 157 0129

#### KWAZULU-NATAL

Ballito: 032 946 2131  
Newcastle: 010 045 0910  
Pietermaritzburg: 087 405 0664  
Richards Bay: 087 898 8589  
Umhlanga: 031 020 0403

#### LIMPOPO

Polokwane: 015 297 6136  
Tzaneen: 015 004 0286

#### MPUMALANGA

Ermelo: 087 148 1711  
Middelburg: 087 700 2232  
Nelspruit: 013 752 3797

Secunda: 017 631 3531  
Witbank: 013 110 0580

#### NORTH WEST

Lichtenburg: 018 632 2027  
Rustenburg: 014 050 0999

#### EASTERN CAPE

Port Elizabeth: 041 110 0010

#### WESTERN CAPE

Bellville: 021 946 1390  
Hermanus: 021 020 1441  
Paarden Eiland: 021 036 0996  
Parklands: 010 055 7212

#### Paarl: 022 110 0010

Somerset West: 087 405 0566  
Vredenburg: 010 055 7213  
Worcester: 023 342 0231



## Design the next product to light up our stores, and you can win big!

Showcase your talents by designing an **innovative desk lamp**, and you can stand the chance of winning **R100,000** and **1% royalties** on your **invention!**

Scan the barcode below or visit [www.switch.awardsplatform.com](http://www.switch.awardsplatform.com) to enter the **Switch Design Competition** today.



Entries Open: 1 May 2022 - 31 August 2022.  
Terms and conditions apply.

Proudly brought to you by



## Get rewarded when you purchase from ACDC Express!

Shop, swipe, and earn with the **ACDC Express loyalty card**. Sign up today and earn **1% in cashback rewards** on every ACDC Express purchase.



Enquire at your nearest ACDC Express store to get your card and start earning cashback today. Terms and conditions apply.